

SEMITÜRK®

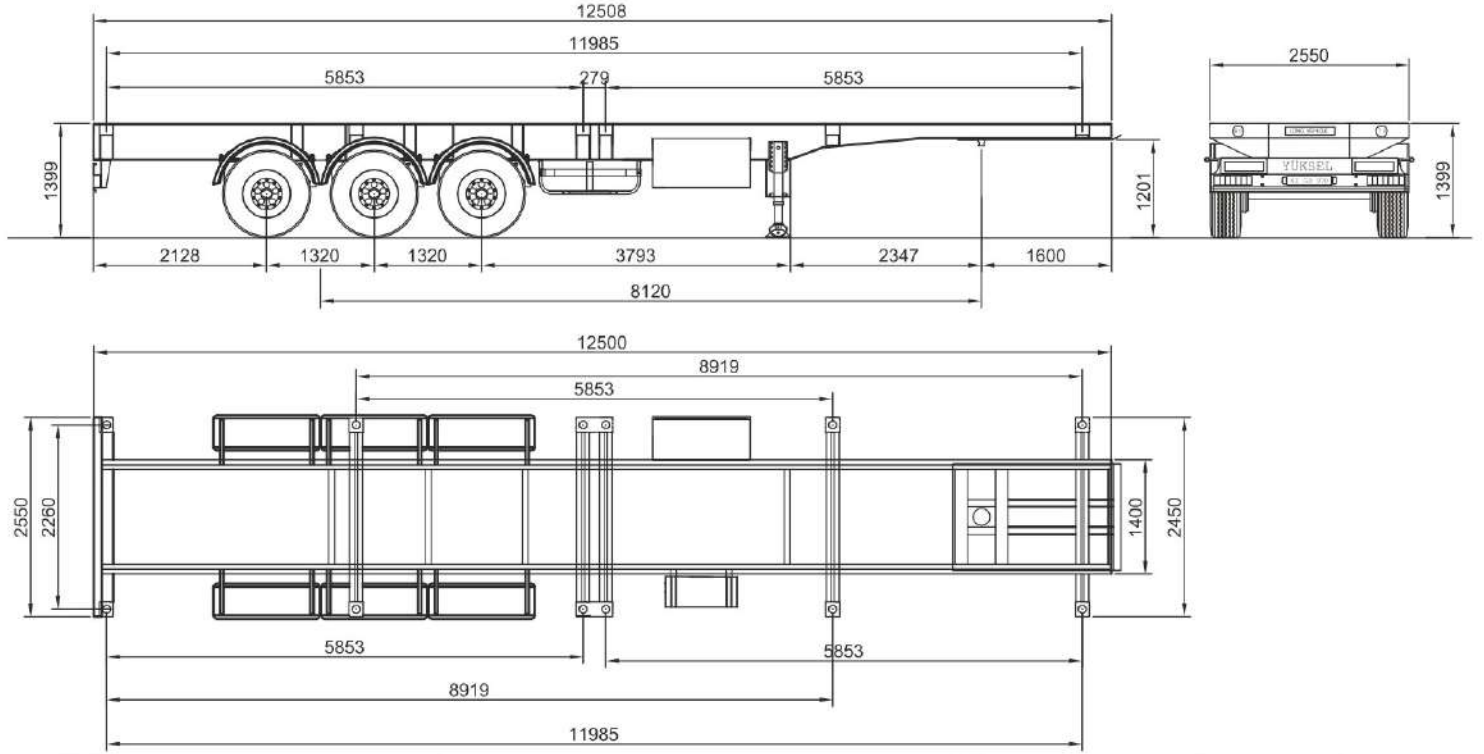


MODEL:
STFB30A255

MODEL:
STFB30A265

CONTAINER CARRIER SEMI - TRAILER





SEMI - TRAILER		STFB30A255	STFB30A265
Weight and Dimensions	Model Type	20" Container carrier	40" Container carrier
	Total Length	7.549 mm	12.500 mm
	Total Width	2.550 mm	2.550 mm
	Gates	—	—
	Dead Weight	5.000 kg	5.500 kg
Main Structure and Chassis		Manufactured from 'ST52' material U-shaped reinforced carrier cross - members 4 x 20" Twist locks	Manufactured from 'ST52' material U-shaped reinforced carrier cross - members 4 x 20" Twist locks 4 x 40" Twist locks
Tires		385 / 65 R 22.5" size 6 + 1 units tubeless tires	
Brake System		Dual circuit brake hardware, EBS, 2S/2M & 4S/2M	
King Pin		2", bolt - connected in DIN standards	
Landing Gears		Telescopic landing gears with two mechanical speeds; Dynamic: 25.000 kg, Static : 50.000 kg	
Axles		3 axles BPW compatible, 12 ton capacity, square section	
Suspension System		Air - suspension "5813", 100 mm Z-type springs, suspension valves and shock absorbers	
Electricity Hardware 'E certified'		24 V lighting system, 7 pole distribution cable and required hardware for traffic regulation	
Standard Accessories		1 x spare tire holder, 1 x tool box, 1 x water tank, wheel chock and holder, FRP mudguard	